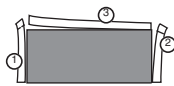
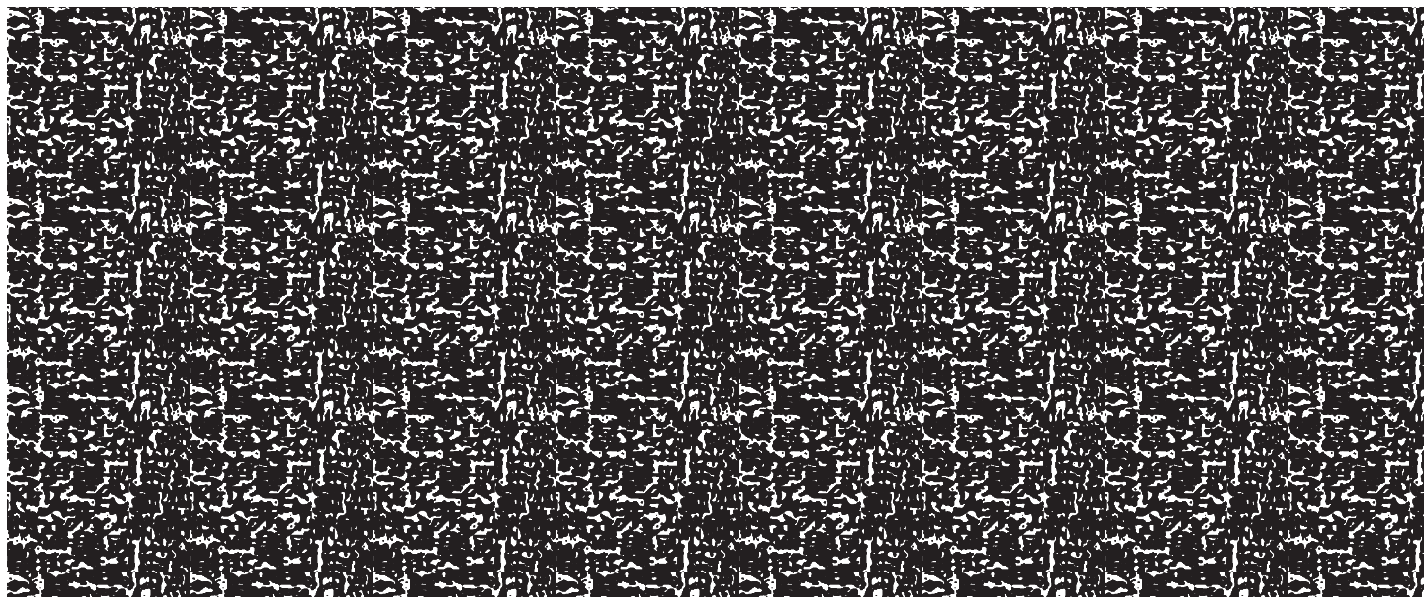


REMOVE SIDE EDGES FIRST  
THEN FOLD AND TEAR THIS STUB ALONG PERFORATION



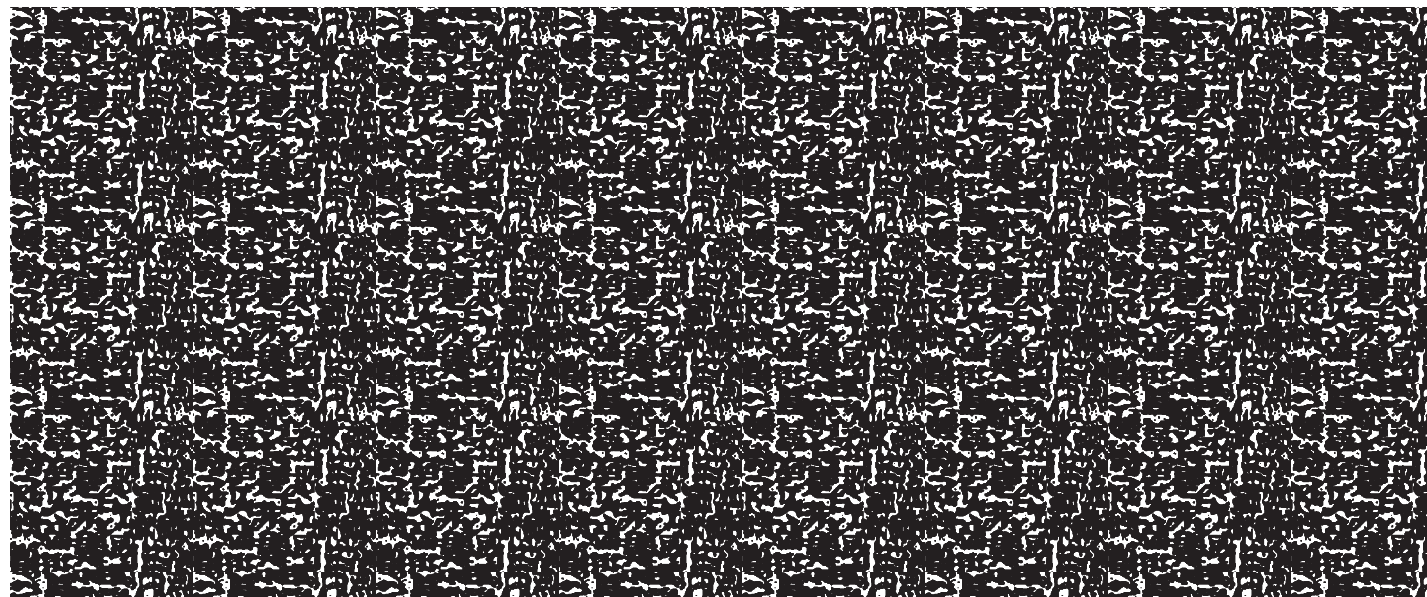
REMOVE SIDE EDGES FIRST  
THEN FOLD AND TEAR THIS STUB ALONG PERFORATION

REMOVE THESE EDGES FIRST  
FOLD, CREASE AND TEAR ALONG PERFORATION



REMOVE THESE EDGES FIRST  
FOLD, CREASE AND TEAR ALONG PERFORATION

REMOVE THESE EDGES FIRST  
FOLD, CREASE AND TEAR ALONG PERFORATION



REMOVE THESE EDGES FIRST  
FOLD, CREASE AND TEAR ALONG PERFORATION

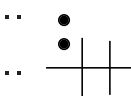
SEE OTHER SIDE FOR  
OPENING INSTRUCTIONS

SEE OTHER SIDE FOR  
OPENING INSTRUCTIONS

SEE OTHER SIDE FOR  
OPENING INSTRUCTIONS

SEE OTHER SIDE FOR  
OPENING INSTRUCTIONS

B



B

