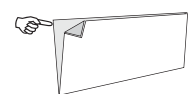


2. WITH THIS SIDE UP, SLIDE FINGER BETWEEN FRONT AND MIDDLE PANEL, SLIDE FINGER UP TO OPEN
3. BEFORE DETACHING SLIDE FINGER UP BETWEEN MIDDLE PANEL AND ADDRESS PANEL TO REMOVE



FIRST: REMOVE THESE EDGES  
FOLD, CREASE AND TEAR ALONG PERFORATION

FIRST: REMOVE THESE EDGES  
FOLD, CREASE AND TEAR ALONG PERFORATION

**Instructions for Recipient**

Generally, distributions from pensions, annuities, profit-sharing and retirement plans (including section 457 state and local government plans), IRAs, insurance contracts, etc., are reported to recipients on Form 1099-R.

**Qualified plans.** If your annuity starting date is after 1997, you must use the simplified method to figure your taxable amount if your payer did not show the taxable amount in box 2a. See the instructions for Form 1040 or 1040A.

**IRAs.** For distributions from a traditional individual retirement arrangement (IRA), simplified employee pension (SEP), or savings incentive match plan for employees (SIMPLE), generally the payer is not required to compute the taxable amount. See the Form 1040 or 1040A instructions to determine the taxable amount. If you are at least age 70½, you must take minimum distributions from your IRA (other than a Roth IRA). If you do not, you may be subject to a 50% excise tax on the amount that should have been distributed. See Pub. 590 for more information on IRAs.

**Roth IRAs.** For distributions from a Roth IRA, generally the payer is not required to compute the taxable amount. You must compute any taxable amount on Form 8606. An amount shown in box 2a may be taxable earnings on an excess contribution.

**Loans treated as distributions.** If you borrow money from a qualified plan, section 403(b) plan, or governmental section 457(b) plan, you may have to treat the loan as a distribution and include all or part of the amount borrowed in your income. There are exceptions to this rule. If your loan is taxable, Code L will be shown in box 7. See Pub. 575.

**Recipient's identification number.** For your protection, this form may show only the last four digits of your SSN, ITIN, or ATIN. However, the issuer has reported your complete identification number to the IRS, and, where applicable, to state and/or local governments.

**Account number.** May show an account or other unique number the payer assigned to distinguish your account.

**Box 1.** Shows the total amount you received this year. The amount may have been a direct rollover, a transfer or conversion to a Roth IRA, a recharacterized IRA contribution; or you may have received it as periodic payments, as nonperiodic payments, or as a total distribution. Report the amount on Form 1040 or 1040A on the line for "IRA distributions" or "Pensions and annuities" (or the line for "Taxable amount"), and on Form 8606, as applicable. However, if this is a lump-sum distribution, see Form 4972. If you have not reached minimum retirement age, report your disability payments on the line for "Wages, salaries, tips, etc." on your tax return. Also report on that line permissible withdrawals from eligible automatic contribution arrangements and corrective distributions of excess deferrals, excess contributions, or excess aggregate contributions except if you are self-employed.

If a life insurance, annuity, qualified long-term care, or endowment contract was transferred tax free to another trustee or contract issuer, an amount will be shown in this box and Code 6 will be shown in box 7. If a charge or payment was made against the cash value of an annuity contract or the cash surrender value of a life insurance contract for the purchase of qualified long-term care insurance, an amount will be shown in this box and Code W will be shown in box 7. You need not report these amounts on your tax return.

**Box 2a.** This part of the distribution is generally taxable. If there is no entry in this box, the payer may not have all the facts needed to figure the taxable amount. In that case, the first box in box 2b should be checked. You may want to get one of the free publications from the IRS to help you figure the taxable amount. See *Additional information* on the back of Copy C. For an IRA distribution, see *IRAs and Roth IRAs* on this page. For a direct rollover, other than from a qualified plan to a Roth IRA, zero should be

shown, and you must enter zero (-0-) on the "Taxable amount" line of your tax return.

If this is a total distribution from a qualified plan and you were born before January 2, 1936 (or you are the beneficiary of someone born before January 2, 1936), you may be eligible for the 10-year tax option. See the Form 4972 instructions for more information.

If you are an eligible retired public safety officer who elected to exclude from income distributions from your eligible plan used to pay certain insurance premiums, the amount shown in box 2a has not been reduced by the exclusion amount. See the instructions for Form 1040 or 1040A for more information.

**Box 2b.** If the first box is checked, the payer was unable to determine the taxable amount, and box 2a should be blank, except for an IRA. If the second box is checked, the distribution was a total distribution that closed out your account.

**Box 3.** If you received a lump-sum distribution from a qualified plan and were born before January 2, 1936 (or you are the beneficiary of someone born before January 2, 1936), you may be able to elect to treat this amount as a capital gain on Form 4972 (not on Schedule D (Form 1040)). See the Form 4972 instructions. For a charitable gift annuity, report as a long-term capital gain as explained in the instructions for Schedule D.

**Box 4.** Shows federal income tax withheld. Include this amount on your income tax return as tax withheld, and if box 4 shows an amount (other than zero), attach Copy B to your return. Generally, if you will receive payments next year that are not eligible rollover distributions, you can change your withholding or elect not to have income tax withheld by giving the payer Form W-4P.

**Box 5.** Generally, this shows the employee's investment in the contract (after-tax contributions), if any, recovered tax free this year; the portion that is your basis in a designated Roth account;

(Continued on the back of Copy C.)

Remove address panel below to view additional instructions on back of copy C

FIRST: REMOVE THESE EDGES  
FOLD, CREASE AND TEAR ALONG PERFORATION

FIRST: REMOVE THESE EDGES  
FOLD, CREASE AND TEAR ALONG PERFORATION

**Instructions for Recipient (Continued)**

the part of premiums paid on commercial annuities or insurance contracts recovered tax free; or the nontaxable part of a charitable gift annuity. This box does not show any IRA contributions. If the amount shown is your basis in a designated Roth account, the year you first made contributions to that account may be entered in box 11.

**Box 6.** If you received a lump-sum distribution from a qualified plan that includes securities of the employer's company, the net unrealized appreciation (NUA) (any increase in value of such securities while in the trust) is taxed only when you sell the securities unless you choose to include it in your gross income this year. See Pub. 575 and the Form 4972 instructions. If you did not receive a lump-sum distribution, the amount shown is the NUA attributable to employee contributions, which is not taxed until you sell the securities.

**Box 7.** The following codes identify the distribution you received. For more information on these distributions, see the instructions for your tax return. Also, certain distributions may be subject to an additional 10% tax. See the instructions for Form 5329.

- 1—Early distribution, no known exception (in most cases, under age 59½).
- 2—Early distribution, exception applies (under age 59½).
- 3—Disability.
- 4—Death.
- 5—Prohibited transaction.
- 6—Section 1035 exchange (a tax-free exchange of life insurance, annuity, qualified long-term care insurance, or endowment contracts).
- 7—Normal distribution.
- 8—Excess contributions plus earnings/excess deferrals (and/or earnings) taxable in 2012.
- 9—Cost of current life insurance protection.
- A—May be eligible for 10-year tax option (see Form 4972).
- B—Designated Roth account distribution.

**Note.** If Code B is in box 7 and an amount is reported in box 10, see the instructions for Form 5329.

E—Distributions under Employee Plans Compliance Resolution System (EPCRS).

F—Charitable gift annuity.

G—Direct rollover of a distribution (other than a designated Roth account distribution) to a qualified plan, a section 403(b) plan, a governmental section 457(b) plan, or an IRA.

H—Direct rollover of a designated Roth account distribution to a Roth IRA.

J—Early distribution from a Roth IRA, no known exception (in most cases, under age 59½).

L—Loans treated as distributions.

N—Recharacterized IRA contribution made for 2012 and recharacterized in 2012.

P—Excess contributions plus earnings/excess deferrals (and/or earnings) taxable in 2011.

Q—Qualified distribution from a Roth IRA.

R—Recharacterized IRA contribution made for 2011 and recharacterized in 2012.

S—Early distribution from a SIMPLE IRA in first 2 years, no known exception (under age 59½).

T—Roth IRA distribution, exception applies.

U—Dividend distribution from ESOP under sec. 404(k).

**Note.** This distribution is not eligible for rollover.

W—Charges or payments for purchasing qualified long-term care insurance contracts under combined arrangements.

If the IRA/SEP/SIMPLE box is checked, you have received a traditional IRA, SEP, or SIMPLE distribution.

**Box 8.** If you received an annuity contract as part of a distribution, the value of the contract is shown. It is not taxable when you receive it and should not be included in boxes 1 and 2a. When you receive periodic payments from the annuity contract, they are taxable at that time. If the distribution is made to more than one person, the percentage of the annuity contract distributed to you is also shown.

You will need this information if you use the 10-year tax option (Form 4972). If charges were made for qualified long-term care

insurance contracts under combined arrangements, the amount of the reduction in the investment (but not below zero) in the annuity or life insurance contract is reported here.

**Box 9a.** If a total distribution was made to more than one person, the percentage you received is shown.

**Box 9b.** For a life annuity from a qualified plan or from a section 403(b) plan (with after-tax contributions), an amount may be shown for the employee's total investment in the contract. It is used to compute the taxable part of the distribution. See Pub. 575.

**Box 10.** If an amount is reported in this box, see the instructions for Form 5329 and Pub. 575.

**Box 11.** The 1st year you made a contribution to the designated Roth account reported on this form is shown in this box.

**Boxes 12—17.** If state or local income tax was withheld from the distribution, boxes 14 and 17 may show the part of the distribution subject to state and/or local tax.

**Additional information.** You may want to see:

Form W-4P, Withholding Certificate for Pension or Annuity Payments.

Form 4972, Tax on Lump-Sum Distributions, Form 5329, Additional Taxes on Qualified Plans (Including IRAs) and Other Tax-Favored Accounts, Form 8606, Nondeductible IRAs.

Pub. 560, Retirement Plans for Small Business (SEP, SIMPLE, and Qualified Plans).

Pub. 571, Tax-Sheltered Annuity Plans (403(b) Plans), Pub. 575, Pension and Annuity Income.

Pub. 590, Individual Retirement Arrangements (IRAs), Pub. 721, Tax Guide to U.S. Civil Service Retirement Benefits,

Pub. 939, General Rule for Pensions and Annuities, Pub. 969, Health Savings Accounts and Other Tax-Favored Health Plans.

B  
B

B  
B

FIRST: REMOVE THESE EDGES  
FOLD, CREASE AND TEAR ALONG PERFORATION

FIRST: REMOVE THESE EDGES  
FOLD, CREASE AND TEAR ALONG PERFORATION

FIRST: REMOVE THESE EDGES  
FOLD, CREASE AND TEAR ALONG PERFORATION

FIRST: REMOVE THESE EDGES  
FOLD, CREASE AND TEAR ALONG PERFORATION